

# **Governance of RIs: The case of ITER**

Carlos Alejandre  
ITER Deputy Director-General

# ITER

The ITER tokamak\* is an experimental nuclear fusion reactor that aims to prove the scientific and technological feasibility of nuclear fusion as an energy source

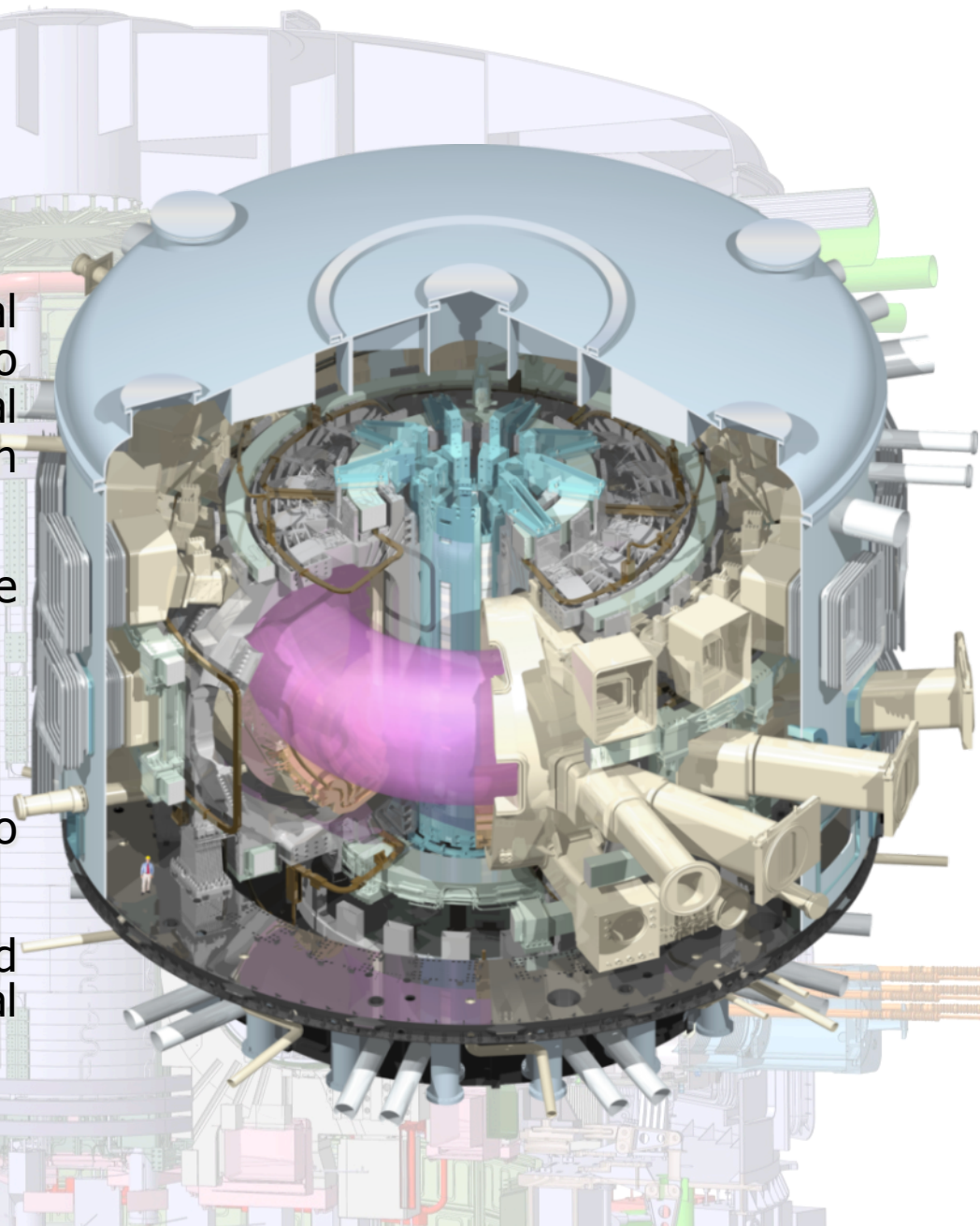
ITER will generate 10 times more energy than it receives.

Input 50 MW – Output 500 MW

It is a necessary step on the way to commercial nuclear fusion energy.

Will demonstrate the availability and integration of technologies essential for a nuclear fusion reactor

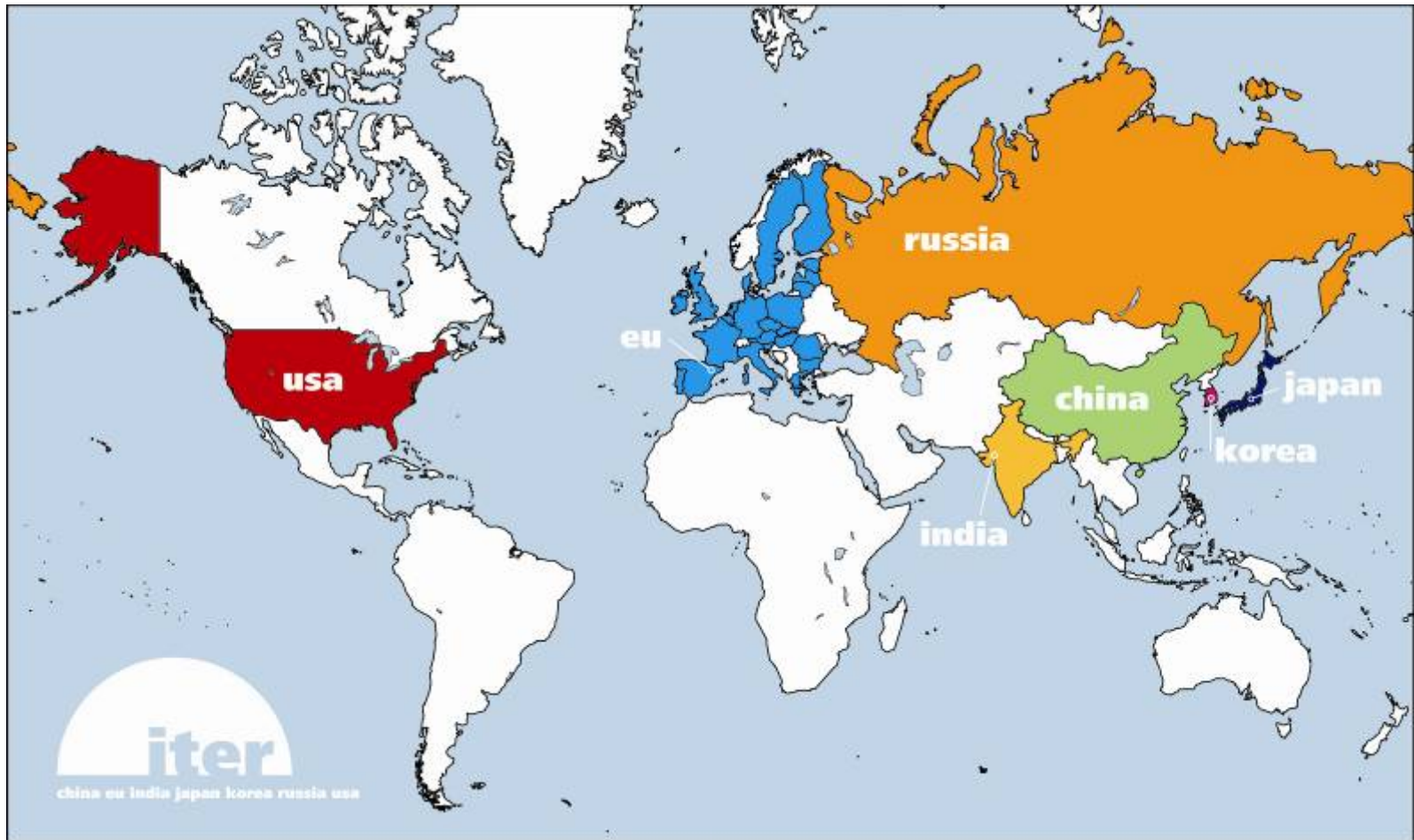
\* Toroidal Chamber, Magnetic Coils





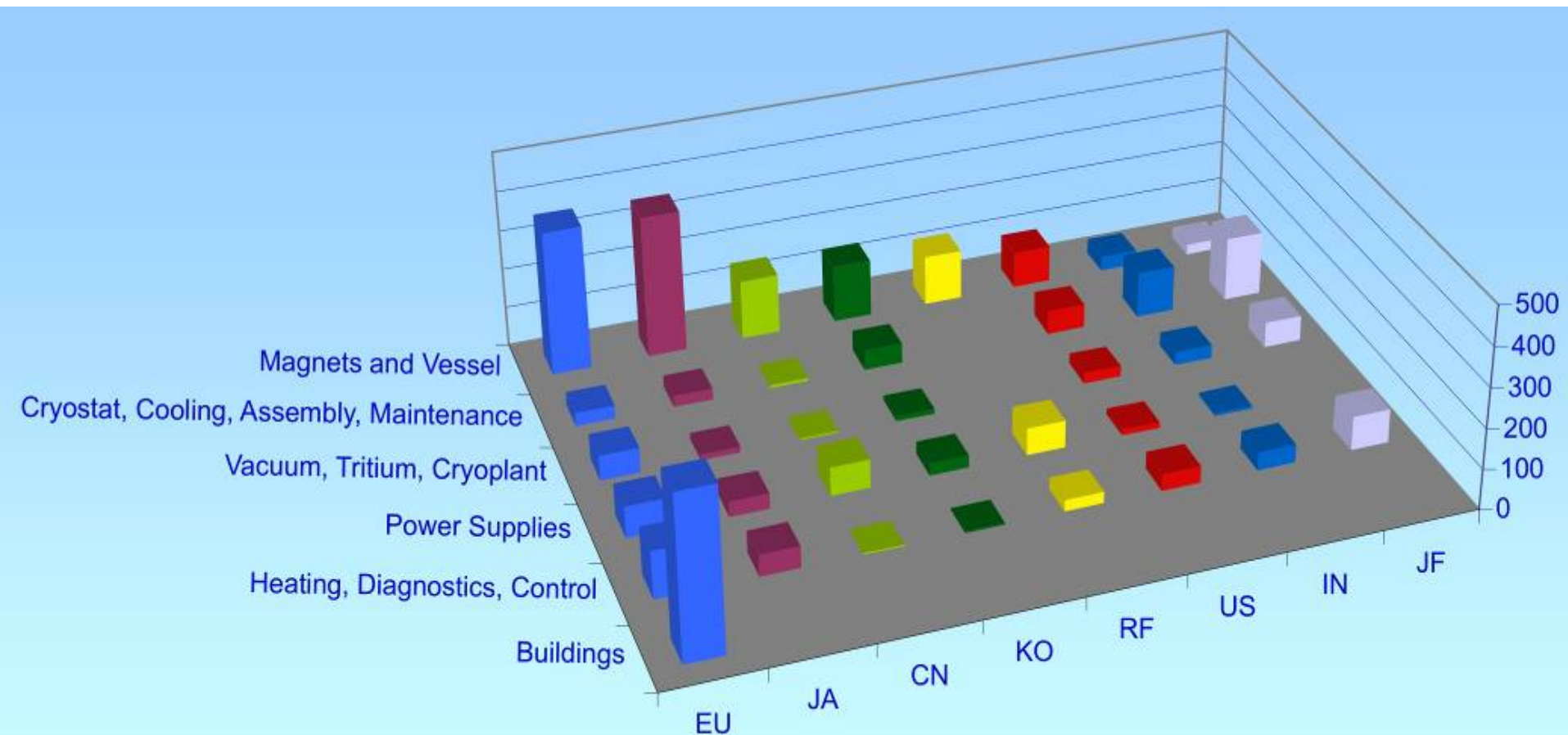
# ITER: A Truly Global Project

Seven Parties, representing more than half the world's population, have joined their forces for the construction of ITER



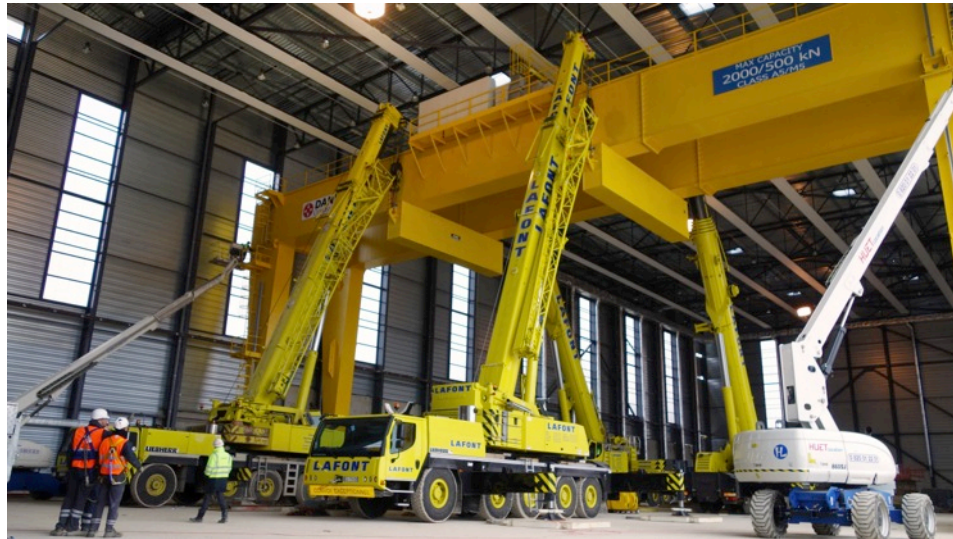
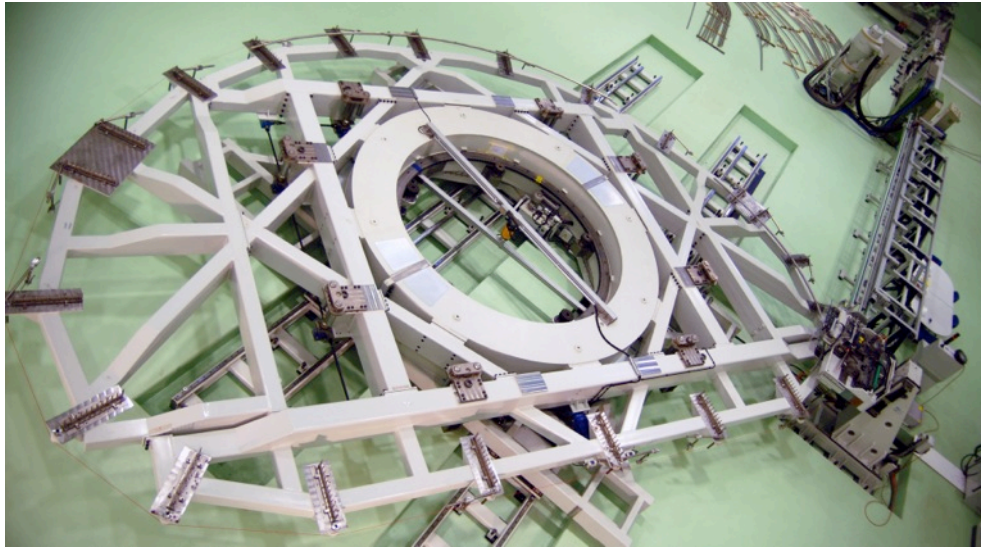
# Procurement Sharing

A unique feature of ITER is that almost all of the machine will be constructed through *in kind* procurement from the Parties





# Latest Construction Progress on ITER Site



# Thank you for your attention

